



RALLY SAFETY PLANNING

Preparing Safety Plans for National and
International (FIA) events
Dar es Salaam, July 2018



© MOTORSPORT
TRAINING AFRICA
2016

INTRODUCTION

***So we know the theory,
how is it done?***



Before you start with the Safety Plan detail



- Finalise the route and the flow
- Track all stages on an appropriate GPS and plot on mapping software
- Identify Spectator points (also for Spectator Guide)
- Ensure Landowner approval for
 - The stages
 - The times that Recce and Rally will Take place
 - Spectator access if applicable
 - Traffic police as well as police services are in agreement
- Finalise the Road Book





Starting with the Safety Plan

A single pass of the route to identify dangerous and midpoint spots with



- Clerk of the Course
- Safety Officer and
- Route director



Drive all special stages and judge the stage with “safety eyes” considering the speed and possible instability of the rally cars





Points to identify



- Expected high volume spectator areas
- Incidental public
- Midpoint radio points (progress monitoring)
- Side roads to be closed off by tape
- Side road to be guarded and taped
- Marshal points, especially flying finish and stop control
- Midpoint Medical (Ambulance or MIV vehicle)
- Escape Routes (also to be manned)
- Possible short cuts
- Helicopter landing sites
- Ensure that the crews cannot get lost



Points to identify- Danger areas for crews



- High drop offs
- Danger spots like bridges, dangerous ditches and jumps
- Obstacles alongside the road which may require protection
- Possible water danger
- Weather conditions





Points to identify- Danger areas for spectators



- Speed of approaching cars
- Changing weather conditions
- What if
 - A cars brakes fail
 - Driver loses control
 - A car rolls
 - It rains





Managing the danger

Decide with the Safety Officer how these possible dangerous spots are going to be managed.



You need to identify all spots with the intention of providing ALL staff and equipment and then match the most urgent ones with the available staff and equipment.



DO NOT PUT THINGS IN THE SAFETY PLAN THAT YOU ARE UNABLE TO PROVIDE. THE PLAN IS A WORKING DOCUMENT AND NOT A WISH LIST





Communicating the plan

The Safety Plan needs to be communicated widely especially to the Stage Commanders and the Course opening cars. The Course cars must then check that all the planned services are in place otherwise it will be impossible to manage an emergency effectively.



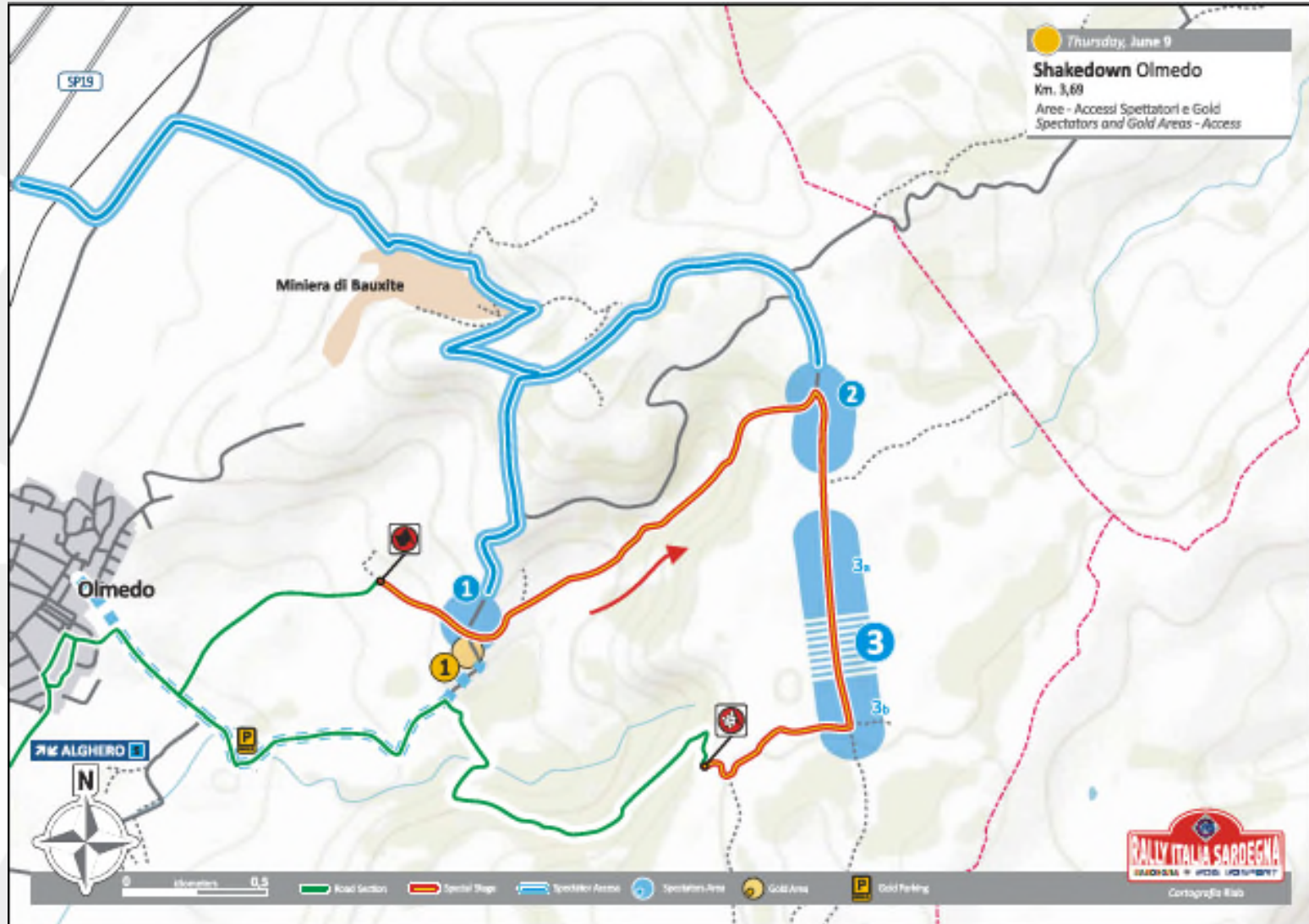


Special Requirements at WRC level

Detailed stage mapping



© MOTORSPORT TRAINING AFRICA 2016





Special Requirements at WRC level Spectator Point Detail



© MOTORSPORT
TRAINING AFRICA
2016

Shakedown

Km. 3,69



1

GPS Area: 40° 38.956'N - 8° 23.982'E

partenza 1ª vettura / first car start: 08:00

Grado d'interesse: ★★★★★
Degree of Interest: ★★★★★

Visibilità: ●●●●●
Visibility: ●●●●●

Accessi: ◆◆◆◆◆
Accesses: ◆◆◆◆◆

Descrizione area/Description area:

Allungo veloce in salita, con l'abitato di Olmedo sullo sfondo, L'area è vicina alla partenza della prova ed alla zona interviste.

Fast uphill straight with the small village of Olmedo in the background. This area is close to the start of the stage and to the interview area.

Foto area/Photo area:



8 27 x 11 50 in

Orario Chiusura SS Spettatori
SS Closing Time Spectators

SD h. 05:00

Orario indicativo partenza vetture ufficiali
Estimated time starting official cars

	SD h.06:00
	SD h.06:30
	SD h.07:00
	SD h.07:10
	SD h.07:20
	SD h.07:30
	SD h.07:40
	SD h.07:50
	SD h.08:00

WRC - WRC2 - WRC3 ogni/every 2'
altri/other 1'



Attendere per muoversi, impegnare la strada dopo il naqqarin dell'auto scopa



Special Requirements at WRC level Spectator Point Detail



© MOTORSPORT
TRAINING AFRICA
2016



	SD h.07:50
	SD h.08:00
WRC - WRC2 - WRC3 ogni/every 2' altri/other 1'	
	Auto Scopa Checked flag car

Attendere per muoversi, impegnare la strada dopo il passaggio dell'auto scopa. Wait to move, engage the road only after the passage of the checked flag car.

Mappa/Map:





Special Requirements at WRC level Spectator Point Detail



© MOTORSPORT
TRAINING AFRICA
2016

Map access / Map access

Itinerario/Route

Cartello Indicatore su strade di accesso: Access road sign:

Mezzo: Vehicle:

Da/From Bivio SP 19 - Intersection SP (provincial road) 19
 SP 19 Alghero - Sassari uscita Olmedo - direzione miniera di bauxite.
 SP 19 Alghero - Sassari exit Olmedo - direction "miniera di bauxite".

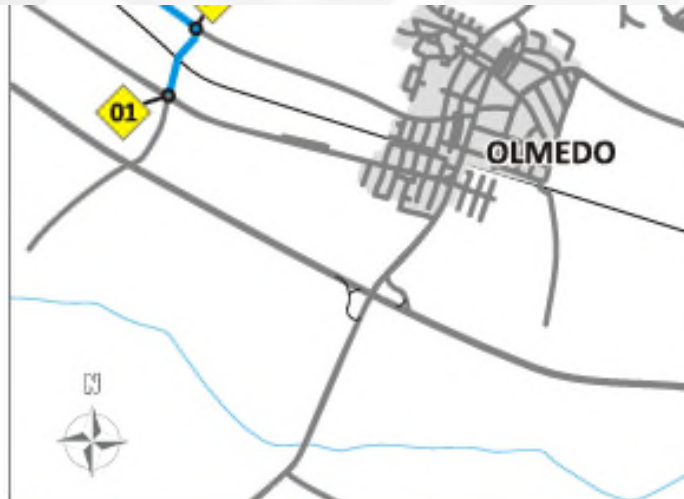
<p>0,00 GPS 40° 39.764'N 8° 22.846'E miniera bauxite</p>	<p>01</p>
<p>0,31</p>	<p>02</p>
<p>0,72 Strada Grascioleddu</p>	<p>03</p>
<p>1,61 Miniera / Mine</p>	<p>04</p>
<p>2,77</p>	<p>05</p>



Special Requirements at WRC level Spectator Point Detail



© MOTORSPORT
TRAINING AFRICA
2016



Indicazioni di sicurezza / Safety Signs

Area consentita Area allowed	Area riservata ai Media Area reserved for Media
Zona Pericolosa Danger Zone	<p>Seguire e rispettare le indicazioni dei commissari Follow directions of the Marshals</p> Commissario Marshal Assistente ai Media Media Assistant

Se scegliete aree senza indicazioni di sicurezza seguite queste semplici indicazioni
If you choose some areas without safety signs follow these simple indications

Salto
Jump



Special Requirements at WRC level Spectator Point Detail



© MOTORSPORT TRAINING AFRICA 2016

SS 2 - 6 Ardara - Ozieri

Km. 7,50



5

GPS Area: 40° 39.048'N - 8° 49.172'E

partenza 1ª vettura / first car start: 09:35/15:15

Historic Rally: 12:05

Grado d'interesse: ★★☆☆☆

Degree of Interest: ★★☆☆☆

Visibilità: ●●●○

Visibility: ●●●○

Accessi: ◆◆◆◆

Accesses: ◆◆◆◆

Descrizione area/Description area:

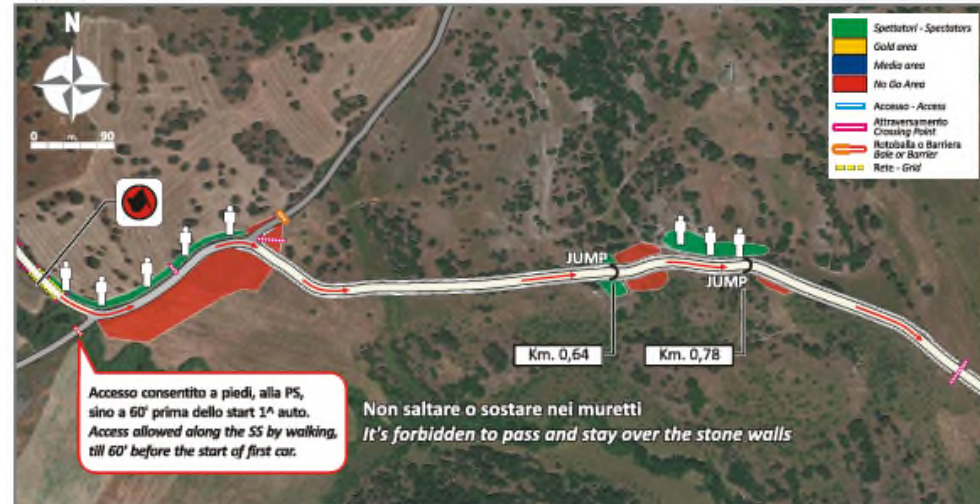
Passaggio veloce terra-asfalto-terra seguito da un tratto veloce con una serie di dossi ed un tornante sinistro in salita.

Fast pass gravel-tarmac-gravel followed by a fast stretch with several crests and a uphill right hairpin corner.

Foto area/Photo area:



Mappa/Map:



Orario Chiusura SS Spettatori

SS Closing Time Spectators

SS 2 - 6 h. 05:35 - 13:15

Orario indicativo partenza vetture ufficiali

Estimated time starting official cars

	SS2 h.07:35 SS6 h.13:15
	SS2 h.08:05 SS6 h.13:45
	SS2 h.08:35 SS6 h.14:15
	SS2 h.09:05 SS6 h.14:35
	SS2 h.09:09 SS6 h.14:49
	SS2 h.09:19 SS6 h.14:59
	SS2 h.09:24 SS6 h.15:04
	SS2 h.09:28 SS6 h.15:08
	SS2 h.09:35 SS6 h.15:15

WRC - WRC2 - WRC3 ogni/ every 2' altri/ other 1'

Auto Scopa
Checked flag car

Attendere per muoversi, impegnare la strada dopo il passaggio dell'auto scopa.
Wait to move, engage the road only after the passage of the checked flag car.



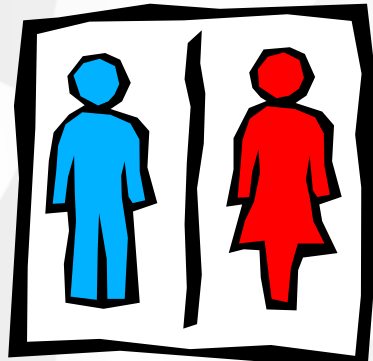
List the documents you think need to be prepared for a rally

- Supplementary Regs





Housekeeping



- Questions always welcome – unless presenter says otherwise
- Off topic – parked
- Presenter can postpone any question
- Parking lot manager





On behalf of AAT and MTA we
express grateful thanks to



SPORT
GRANT PROGRAMME



for their generous grant, and the
FIA Rally Safety Task Force which
has made the implementation of
this programme possible.

